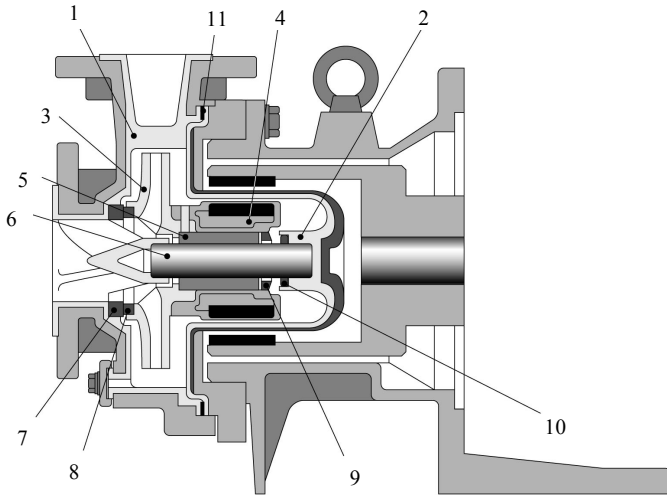


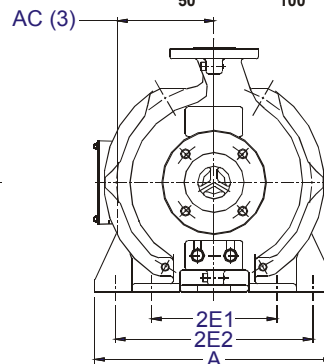
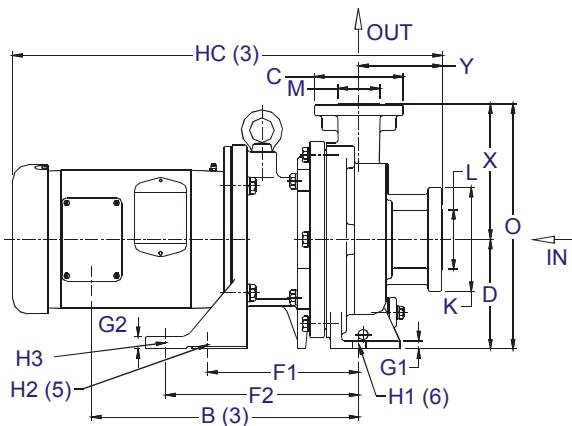
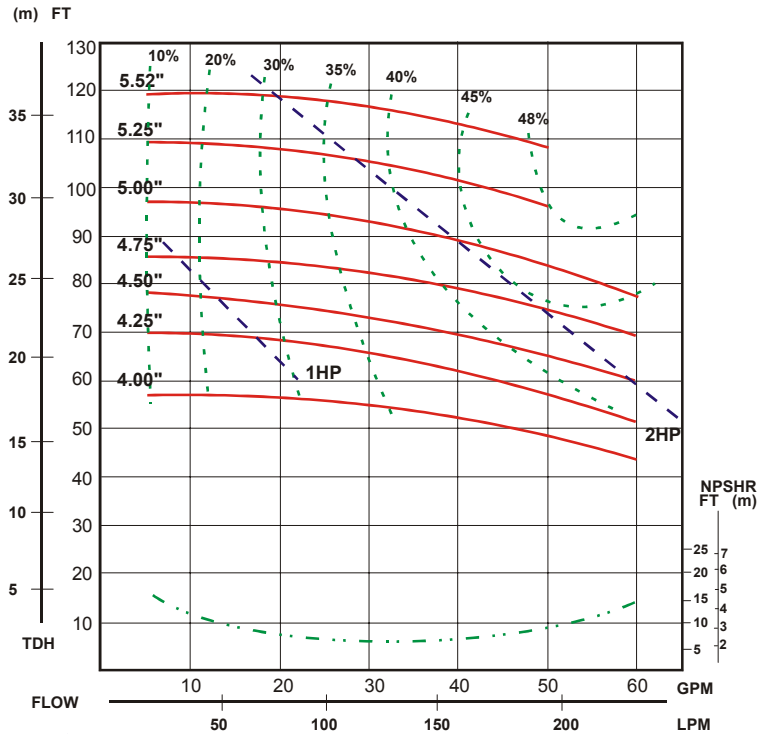
# MDM-1516 2 HP

- ❑ Non-contact Bearing System allows dry run operation (CF models only)
- ❑ Simple, rugged design
- ❑ Corrosion resistant ETFE & PFA internals
- ❑ Spline/pinned impeller design (pat. pending) provides positive locking of impeller/inner magnet while still allowing for individual replacement of each part
- ❑ PFA version temperatures to 302°F



Part	Material		
	ECF	EKK	PKK
1 Front casing	CFRETFE (carbon fiber reinforced ETFE)		PFA
2 Containment shell			
3 Impeller			
4 Inner magnet assy			
5 Bearing	High density carbon	SiC	
6 Shaft	High purity alumina ceramic		
7 Front outboard thrust collar	PTFE		
8 Front inboard thrust collar			
9 Rear inboard thrust collar	High purity alumina ceramic		
10 Rear outboard thrust collar	PTFE (filler charged)	PTFE	
11 Gasket	PTFE		

**Dimensions (inches) and Specifications**  
**Note: Will vary by motor manufacturer**



A	AC(3)	B(3)	D	2E1	2E2	F1	F2	G1	G2	H1(6)	H2(5)	H3	HC(3)	O	X	Y
11.4 2	4.62	12.80	5.26	5.98	9.45	7.24	9.25	0.39	0.60	0.63	0.63	0.63	20.58	11.76	6.50	4.00
HP/Frame	Connection Sizes	Min Flow/Max Head	Standard Capacity	Max Capacity	Pump Weight*	K	L	C	M							
2/145TC	1.5 x 1	5/120	40	60	100	5.00	2.87	4.25	2.00							

\*Pump end only. Does not include motor.