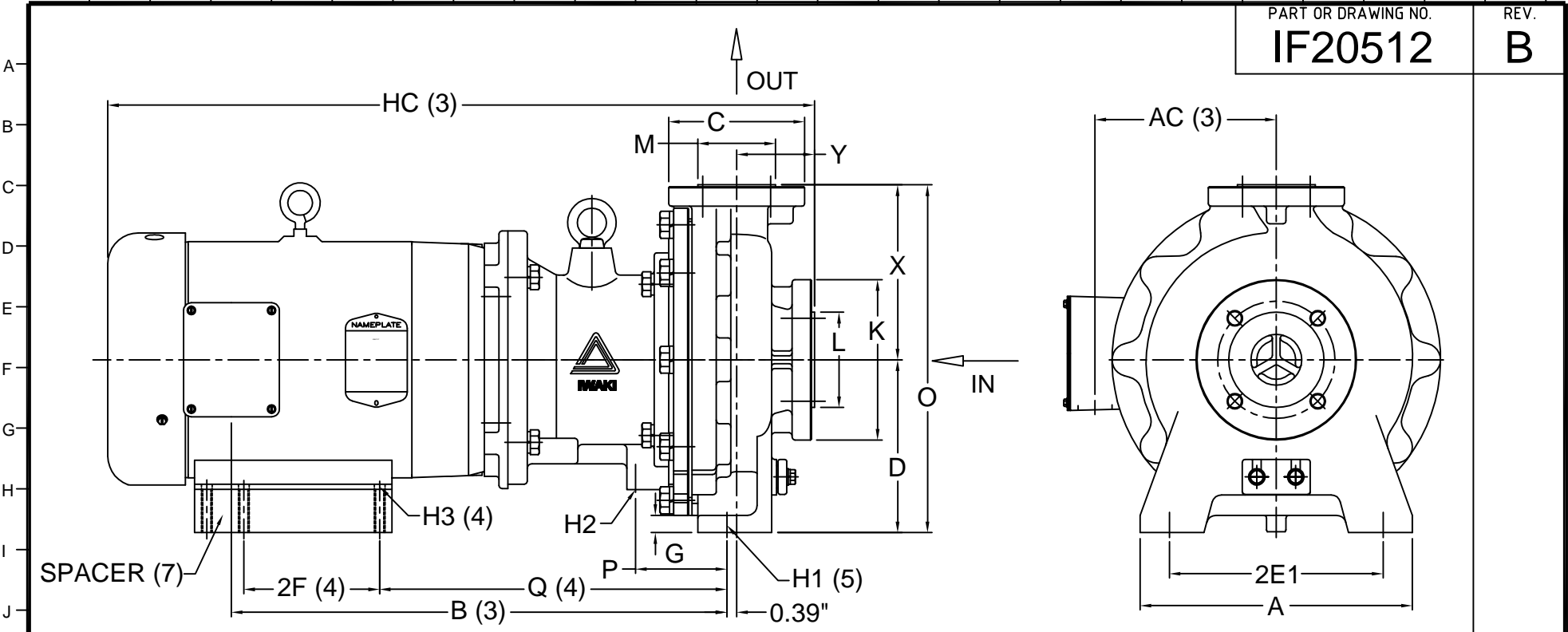



1 2 3 4 5 6 7 8 9 10 11 12 13 14 15 16 17 18 19 20 21 22 23 24 25

PART OR DRAWING NO. **IF20512** REV. **B**



PUMP DIMENSIONS (1)															
A	AC (3)	B (3)	D	2E1	2F (4)	G	H1 (5)	H2	H3 (4)	HC (3)	O	P	Q (4)	X	Y
11.02"	7.34"	20.07"	7.00"	8.66"	5.50"/7.00"	0.70"	0.55"	3/8"-16 UNC	0.41"	28.62"	14.09"	3.70"	14.07"	7.09"	3.15"

MODEL	HP/ FRAME	PUMP FLANGES (2)		DIMENSIONS			
		SUCTION	DISCHARGE	K	L	C	M
MDM-2158	7.5/213TC	2"	1 1/2"	6.50"	3.86"	5.51"	3.15"
	10/215TC						

10622 CENTERLINE HEIGHT CHANGED TO 7.00" 9/7/04										B
ECO#		DESCRIPTION				DATE				REV. LTR.
PUMP WEIGHT		WET-END/BEARING MATERIALS								IF20512
154 LB		CFRETFE OR PFA W/SIC								
EDT	12	07	04	CJC	1					
DRAWN	DAY	MO.	YR.	RELEASED	SHEET NO.				PART OR DWG. NO. IF20512	
										
5 Boynton Rd. Hopping Brook Park Holliston, MA 01746 (508) 429-1440 www.IwakiAmerica.com										
TITLE										REV.
MDM-2158 (7.5 & 10 HP)										B
Dimensional Drawing										

NOTES AND REFERENCES:

- (1) ALL DIMENSIONS IN INCHES. ALL TOLERANCES $\pm 0.125"$, CONSULT IWAKI AMERICA FOR MORE DETAILS.
- (2) BOLT HOLE LOCATIONS OF SUCTION AND DISCHARGE FLANGES CONFORM TO ANSI B16.5 150 LB STANDARD. THE 1.5" AND 2" FLANGE BOLT HOLES HAVE 1/2" -13 AND 5/8" -11 UNC THREADS RESPECTIVLY.
- (3) DIMENSION MAY VARY BASED ON MOTOR MANUFACTURER.
- (4) NEMA MG 1-1993, PART 4 USED FOR REFERENCE.
- (5) SLOTS ARE OPEN ENDED TO REAR OF FRAME.
- (6) DRAWN PER 52B402900 (MDM2158_KKF07/10A-_2)
- (7) SPACER MDM8007, 1.75" HEIGHT WITH 3/8" -16 UNC TAPPED HOLES.