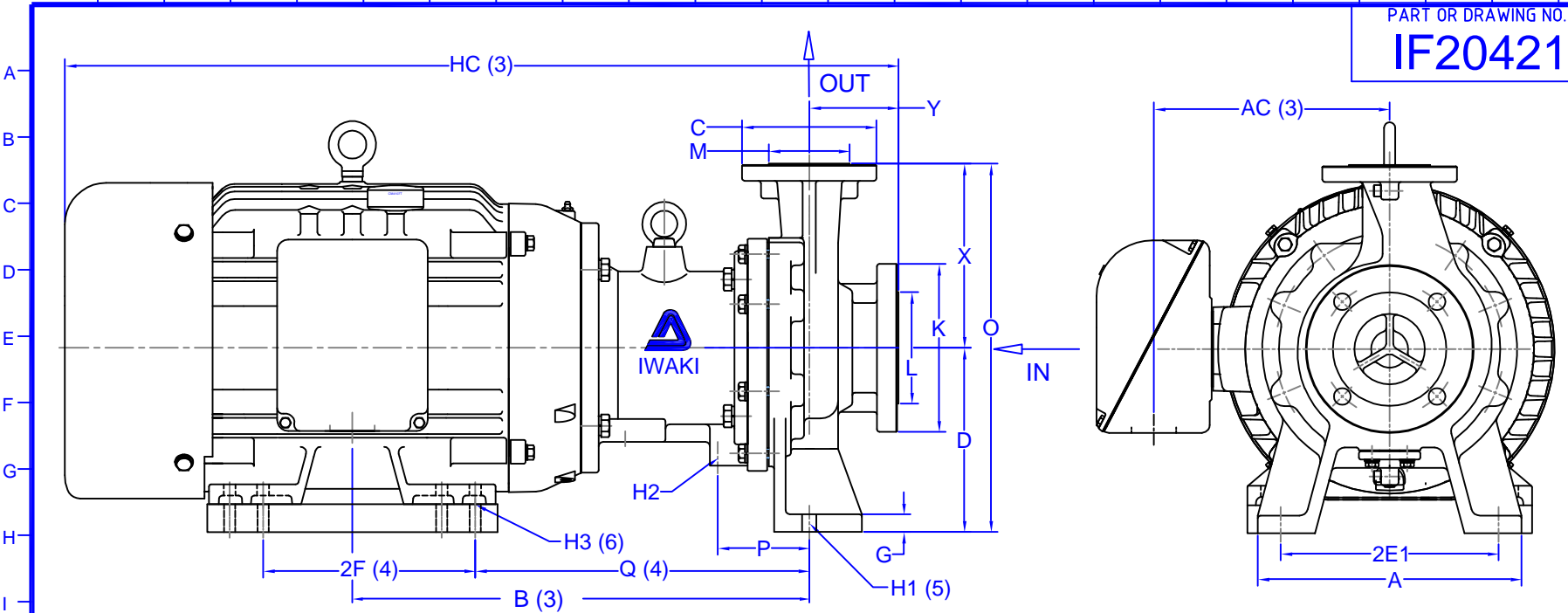


1 2 3 4 5 6 7 8 9 10 11 12 13 14 15 16 17 18 19 20 21 22 23 24 25

PART OR DRAWING NO. **IF20421** REV. **D**



PUMP DIMENSIONS (1)																		
HP/ FRAME	A	AC (3)	B (3)	D	2E1	2F (4)	G	H1 (5)	H2	H3 (4)	HC (3)	O	P	Q (4)	X	Y		
7.5-10/213-215TC	11.81"	6.79"	19.97"	8.25"	9.76"	5.50"/7.00"	0.79"	0.55"	3/8"-16 UNC	0.41"	28.53"	16.50"	4.09"	14.46"	8.25"	4.00"		
15-20/254-256TC		7.56"	20.47"			8.25"/10.00"				0.53"							33.54"	14.97"
25/284TSC		10.56"	20.47"			9.50"/11.00"				0.53"							37.35"	14.97"

MODEL	PUMP FLANGES (2)		DIMENSIONS			
	SUCTION	DISCHARGE	K	L	C	M
MDM-326	3"	2"	7.52"	5.00"	6.02"	3.62"

- NOTES AND REFERENCES:**
- (1) ALL DIMENSIONS IN INCHES. ALL TOLERANCES  $\pm .125"$ , CONSULT IWAKI AMERICA FOR MORE DETAILS. ACTUAL PRODUCT MAY DIFFER ON SOME POINTS.
  - (2) BOLT HOLE LOCATIONS OF SUCTION AND DISCHARGE FLANGES CONFORM TO ANSI B16.5 150 LB STANDARD.
  - (3) DIMENSIONS MAY VARY BASED ON MOTOR SIZE AND MANUFACTURER.
  - (4) NEMA MG 1-1993, PART 4 USED FOR REFERENCE.
  - (5) SLOTS ARE OPEN ENDED TO SIDE OF FRAME.
  - (6) SPACER MDM8004 FOR 7.5-10HP WITH 2.99" HEIGHT, TAPPED THRU WITH 3/8"-16 UNC THREADS. SPACER MDM8003 FOR 15-20 HP WITH 1.99" HEIGHT, TAPPED THRU WITH 1/2"-13 UNC THREADS. SPACER MDM8009 FOR 25 HP WITH 1.25" HEIGHT, CLEARANCE FOR 1/2"-13 UNC BOLT.
  - (7) PUMP DIMENSIONS BASED ON ANSI B73.3M-1997.
  - (8) DRAWN PER 2A01439 (MDM326 F A-2)

I0619 UPDATED DWG TO INCLUDE 25HP: CJC 11-07-05  
 I0619 CHANGED FORMAT AND EDITED: EDT 08-03-04

ECO#	DESCRIPTION	DATE	REV. LTR.
			D
			C

PUMP WEIGHT				WET-END MATERIALS			
144 LB				CFRETTE OR PFA			
EDT	03	08	04	CJC	1		
DRAWN	DAY	MO.	YR.	RELEASED	SHEET NO.		

**IWAKI AMERICA**  
 www.IwakiAmerica.com

5 Boynton Rd.  
 Hopping Brook Park  
 Holliston, MA 01746  
 (508) 429-1440

TITLE  
**MDM-326 (7.5 - 25 HP)**  
 Dimensional Drawing

PART OR DWG. NO. **IF20421**

REV. **D**