

# Standard Product Capabilities

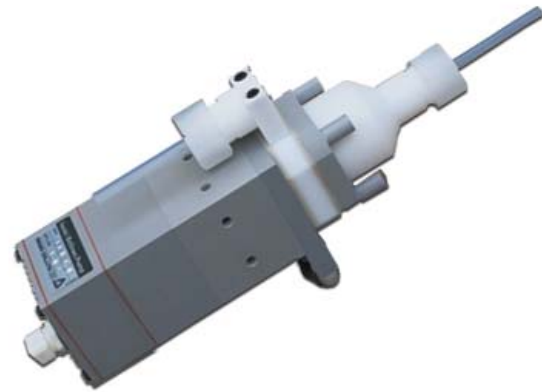
Pump solutions from a World Leader



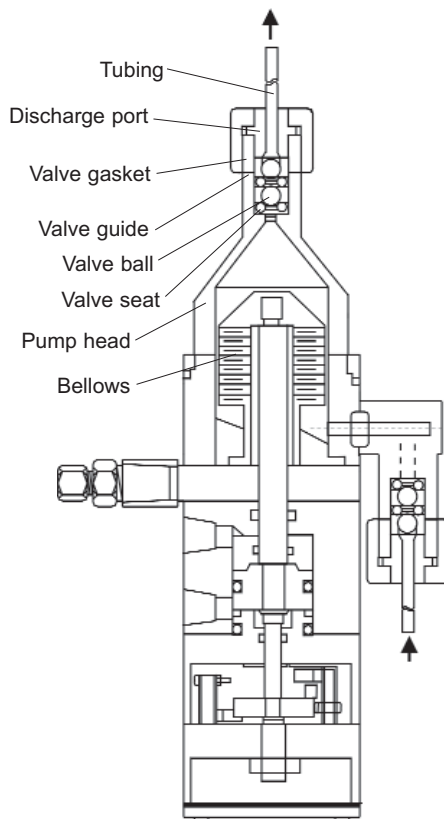
## CFD Series

### Highly accurate pneumatic metering pump

- Capable of 1% repeatability (which translates into efficient use of chemistry and fast replenishment without overshooting the target)
- PTFE and PFA wetted parts ensure process purity, as does an integral leak detection sensor.
- Suction and discharge double ball check valves reduce the number of fittings associated with external valving and make installation easy.
- Integration with existing process controllers is simple
- Design includes optical position sensor and integral leak sensor.



*Think twice. Spec Once.*



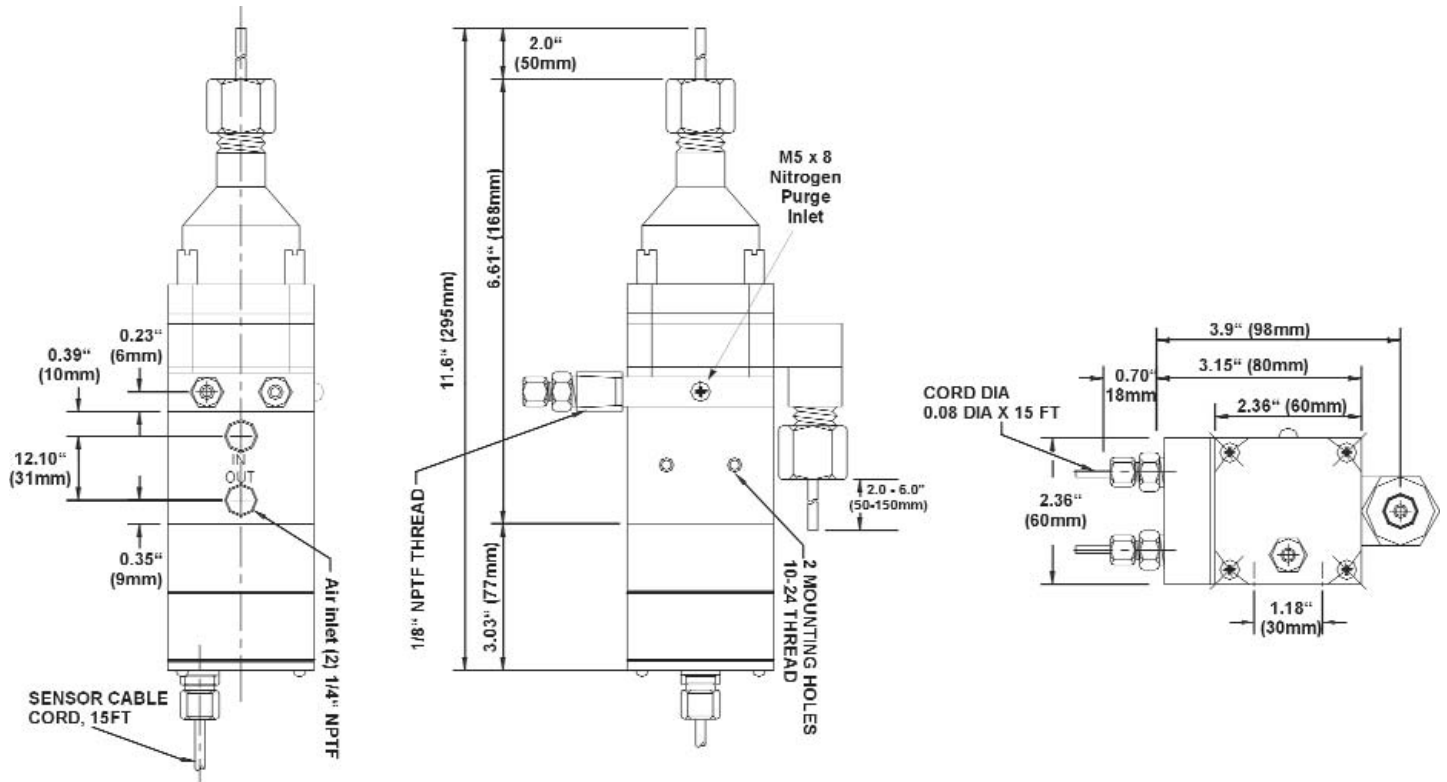
General Specifications	CFD-8T-B
Maximum discharge per shot	0.33 oz (10 ml)
Maximum pressure	7.11 psi (0.5 kg/cm <sup>2</sup> )
Maximum stroke rate	30 spm
Supply air pressure	21 - 43 psi (1.5 - 3.0 kg/cm <sup>2</sup> )
Temperature range of liquid handled	68 - 140°F (20 - 60°C)
Air consumption	.006 ft <sup>3</sup> /shot (0.18 NL/shot)
Wet end material	PTFE, PFA
Pump connection port diameter	¼" O.D. tubing (Ø6.35mm x Ø4.35mm)
Input voltage (sensors)	5 VDC
Output voltage (sensors)	0 - 5 VDC
Supply air connection port diameter	¼" NPTF
Weight	3.3 lbs (1.5 kg)





## Dimensions

### CFD-8T-B



Dimensions subject to change without notice. Consult Iwaki America for current information.



IALT-00036.C Jul 2008